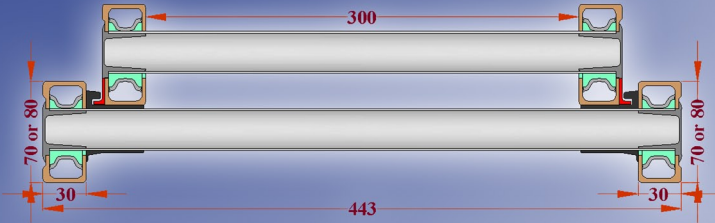
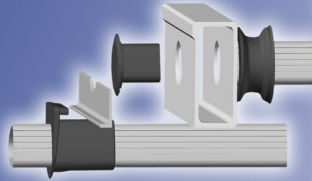


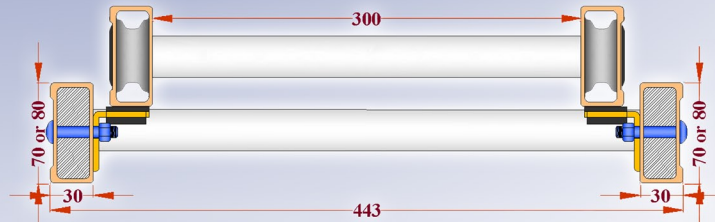
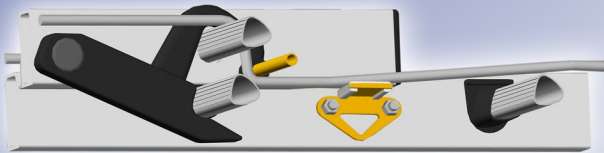
# PELCO Ladders



Latest model PELCO Extension Ladders have a new internal guide to replace the external steel guides. Aluminium rails sliding in nylon guides provide a strong, durable and lighter solution. Our cleaner Ladders are safer and will not damage roof racks and other equipment.



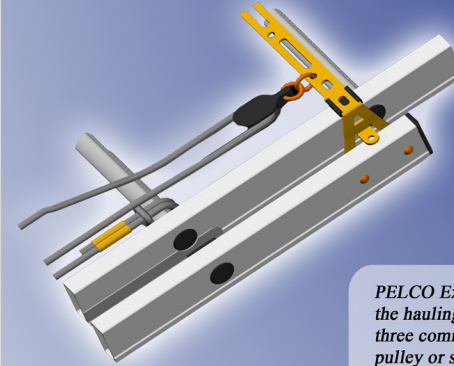
PELCO Extension Ladders feature a spring loaded, glass reinforced, nylon clutch. Only a spring loaded clutch will reliably catch the top section at all angles of Ladder operation. Gravity operated clutches often fail when the Ladder is close to vertical, or is being used incorrectly. Our plastic clutch is slightly resilient in order to protect the aluminium rungs from constant dropping of the top section.



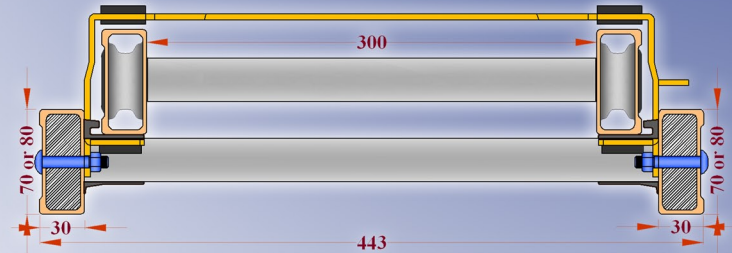
834 Tremaine Ave, Palmerston North, New Zealand 4414  
Tel: +64 6 357 8039, Fax: +64 6 357 7750, [www.pelco.co.nz](http://www.pelco.co.nz)



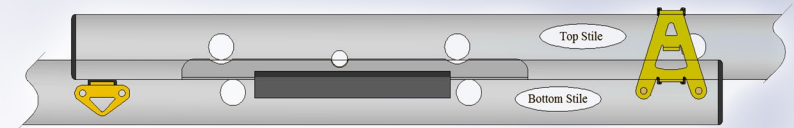
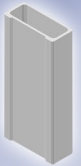
# PELCO Ladders



PELCO Extension Ladders are available with the hauling rope system fitted in any of the three common positions – centre pulley, offset pulley or side pulley. Pelco fits braided polyester rope to Extension Ladders as polyester is the best rope for resistance to UV radiation.



PELCO Fibreglass Ladder stiles have been carefully designed in conjunction with experts in the field of fibreglass pultrusion. Our fibreglass stiles have the mass of glass concentrated into the four corners of the section in order to resist both splitting along the corners and edge impacts.



834 Tremaine Ave, Palmerston North, New Zealand 4414  
Tel: +64 6 357 8039, Fax: +64 6 357 7750, [www.pelco.co.nz](http://www.pelco.co.nz)

