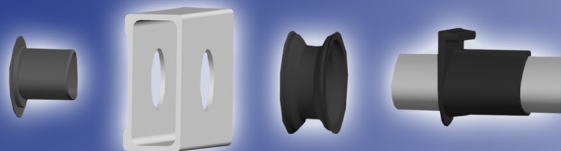
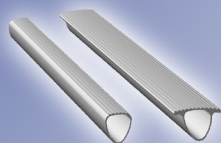


PELCO Ladders



PELCO aluminium rungs are accurately located into both faces of our box-section stiles and rigidly glued in place to provide a permanent joint. Compare our joint with others and you will find none superior for rigidity and longevity.

PELCO fits safety-grip D section rungs plus two wider T section rungs at the top where Lines need to stand for long periods.



PELCO Linemen Ladders feature a Pole Becket fitted at the top which consists of three layers of nylon webbing protected by a plastic sleeve. This design conforms to the shape of the pole to provide a secure grip. Our glass reinforced nylon bridge protects the top joints in the situation where a Ladder falls off a pole. An eye bolt is provided for attachment of a head rope.

PELCO Fibreglass Ladders are designed to exceed all the requirements of Australia / New Zealand AS/NZS1892/3 Standard and European Standard EN131.

Model	GRE 21	GRE 24	GRE 27	GRE 30	GRE 33	GRE 36	GRE 39	GRE 42	GRE 45	GRE 48	GRE 51	GRE 54	GRE 57	GRE 60
Closed Length	2.1m	2.4m	2.7m	3m	3.3m	3.6m	3.9m	4.2m	4.5m	4.8m	5.1m	5.4m	5.7m	6m
Extended Length	3.3m	3.9m	4.5m	5.1m	5.7m	6.3m	6.9m	7.5m	8.1m	8.7m	9.3m	9.9m	10.5m	11.1m
Load Rating	140kg	140kg	140kg	140kg	140kg	140kg	140kg	140kg	140kg	140kg	140kg	140kg	140kg	140kg
Weight	16.5kg	18kg	19.5kg	21kg	22.5kg	24kg	26.5kg	28kg	29.5kg	31kg	34kg	35.5kg	37kg	38.5kg
Stile Size	70x30	70x30	70x30	70x30	70x30	70x30	70x30	70x30	70x30	80x30	80x30	80x30	80x30	80x30

PELCO - Top quality Ladders Since 1937

834 Tremain Ave, Palmerston North, New Zealand 4414
Tel: +64 6 357 8039, Fax: +64 6 357 7750, www.pelco.co.nz

PELCO Ladders



Fibreglass Ladders

After 75 years of manufacturing Timber Ladders, PELCO has now developed Fibreglass Ladders to add to our range of non-conductive Ladders for the Electricity and Telcom Industries.

Just as we believe our Lamelite™ Ladders are the best Timber Extension Ladders you can buy, we also believe our new Fibreglass Ladders are the best Fibreglass Ladders for Electricity Linesmen – safe, durable and user friendly.

*** STRENGTH** Pelco Fibreglass Ladders have strong box-section stiles. These stiles have thicker corners than competing stiles which prevents splitting along the corners and concentrates strength where it is needed.

*** RIGIDITY** Box-section Ladder stiles are torsionally rigid, whereas channel section stiles are floppy. This translates into a more rigid Ladder which feels safer to work on. Box-section stiles also allow deep rung joints which are naturally rigid and free of twist.

*** DURABILITY** Pelco's Fibreglass ladder stiles are made from Vinylster resin coloured white. Vinylster is a better all round resin for ladder stiles - greater strength, more heat resistance, less water absorption and a more reliable glue bond. The white titanium dioxide pigment is an excellent UV blocker.

*** USER FRIENDLY** Pelco has developed a new guide to replace the external guides which were vulnerable to damage and a danger to user's hands. Pelco's spring loaded clutch arrests the free-fall of the top section at all aspects of Ladder operation. Plastic glides, braided polyester rope and a proven pole becket complete our design.

*** SAFE** The essential elements of any Ladder – Strength, Stability, Durability, Weight and Cost are all interrelated. Any Ladder which is lighter and/or cheaper is almost certainly less strong and less durable. The designers at PELCO believe they have achieved the best possible balance of all these factors, with the emphasis on Safety.

834 Tremain Ave, Palmerston North, New Zealand 4414
Tel: +64 6 357 8039, Fax: +64 6 357 7750, www.pelco.co.nz